

SonoScape

Caring for Life through Innovation

E1Vet

Company Milestone

2002: Company Founded in Shenzhen, China

2008: Received "European Entrepreneurial Company 2008" award from FROST & SULLIVAN

2009: Received "Product Quality Leadership Award 2009" from FROST & SULLIVAN

2011: Received the Reddot 2011 Product Design Award for S20 in Essen, Germany

2013: Received "Ultrasound Market Growth Leadership Award, 2013" from FROST & SULLIVAN

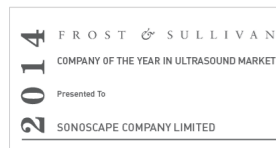
2014: Received the iF product design award 2014 for S9 in Munich, Germany

2014: Received "Company of the Year in Ultrasound Market, 2014" from FROST & SULLIVAN

2016: Received "Product innovation in Electronic Endoscopy Market" from FROST & SULLIVAN

2017: Received the iF product design award 2017 for X5 in Munich, Germany

2017: Listed on the Shenzhen Stock Exchange in April



ISO 13485

CE 0197

SonoScape

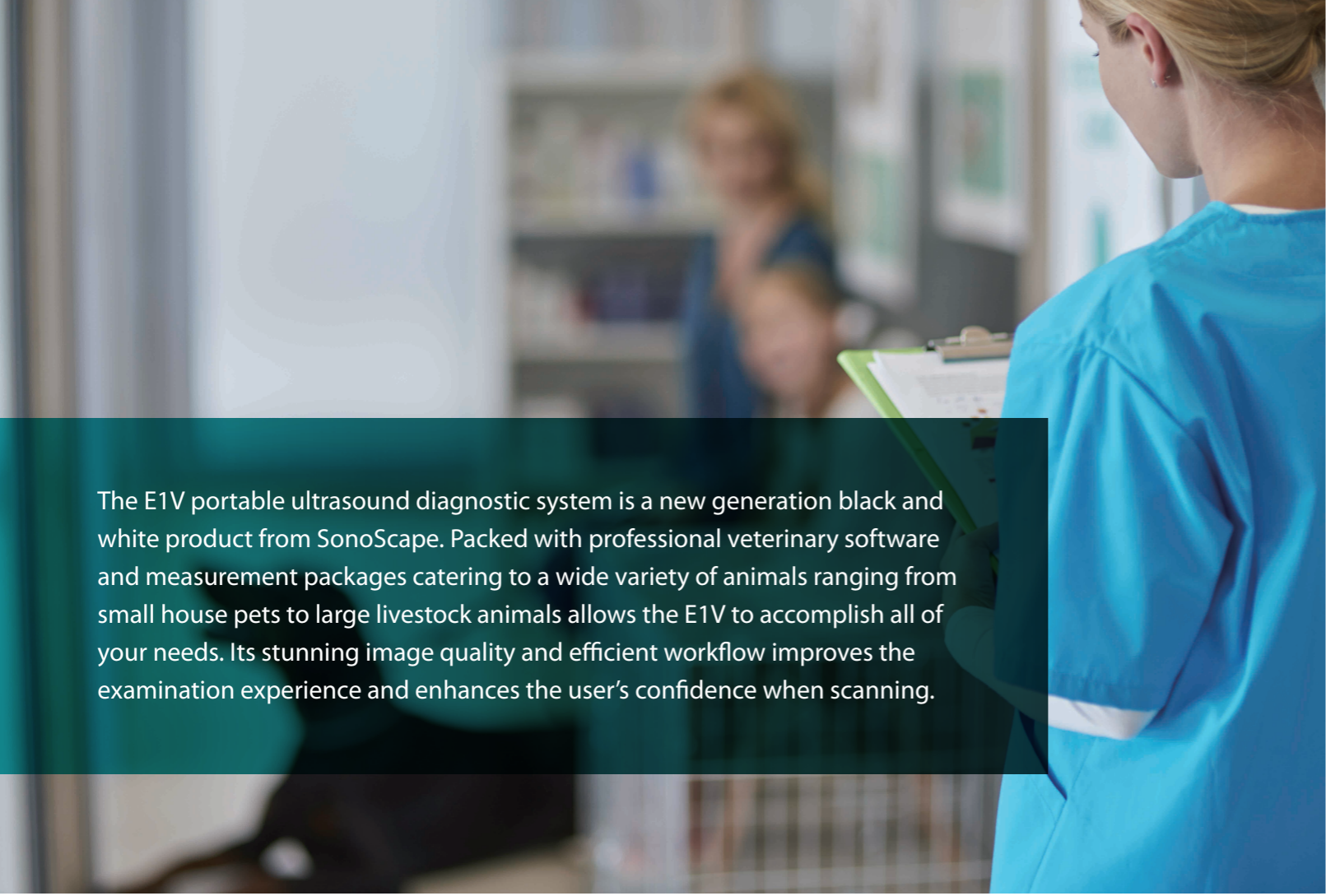
SonoScape Medical Corp.

Yizhe Building, Yuquan Road, Shenzhen, 518051, China

Tel: 86-755-26722890 Fax: 86-755-26722850

E-mail: market@sonoscape.net www.sonoscape.net

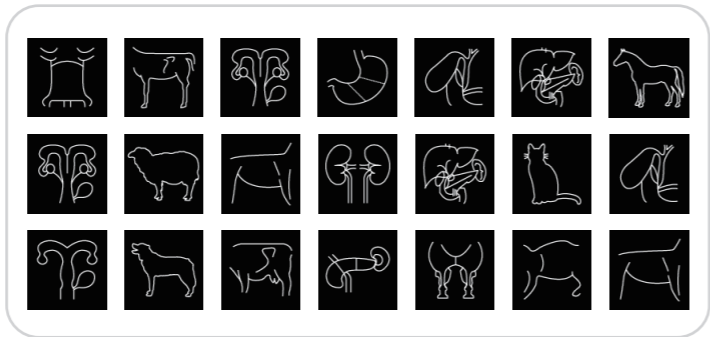
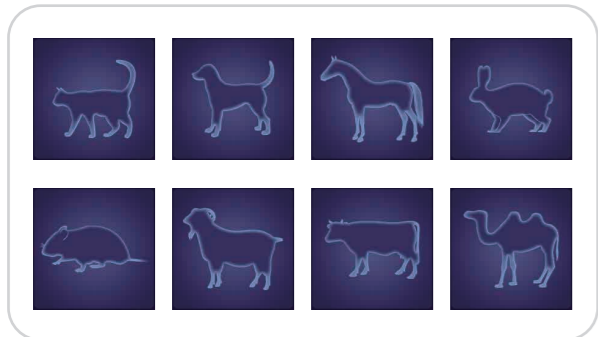




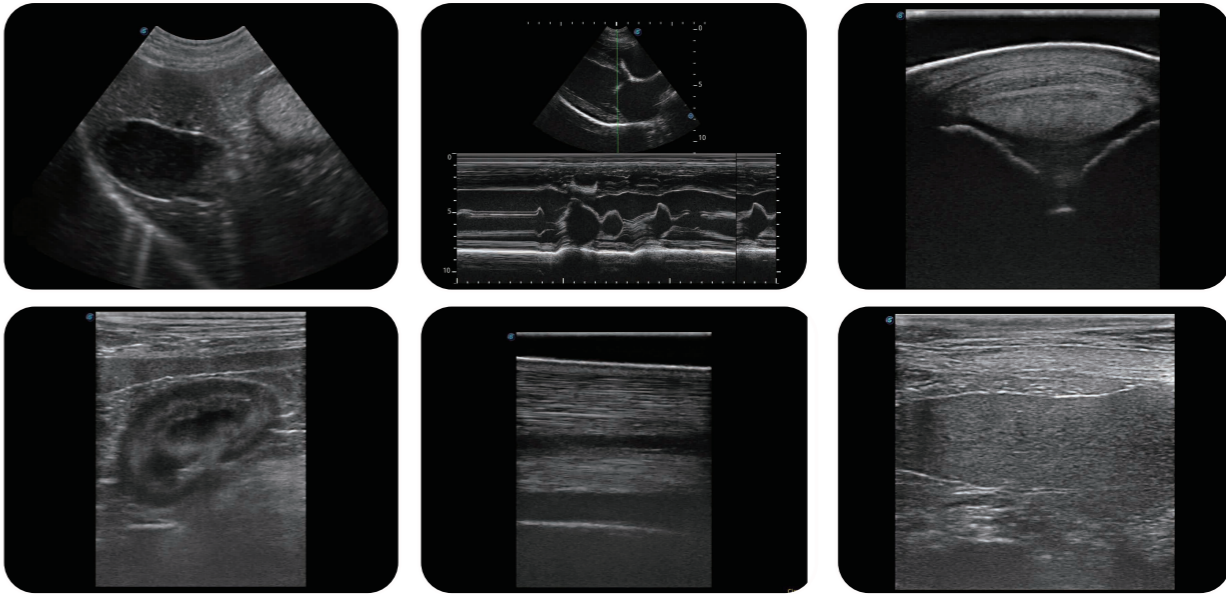
The E1V portable ultrasound diagnostic system is a new generation black and white product from SonoScape. Packed with professional veterinary software and measurement packages catering to a wide variety of animals ranging from small house pets to large livestock animals allows the E1V to accomplish all of your needs. Its stunning image quality and efficient workflow improves the examination experience and enhances the user's confidence when scanning.

Incorporating veterinary applications found in high end ultrasound machines, the E1V is able to cover many diagnostic imaging needs in one system with high-quality detailed imagery.

- Professional veterinary measurements and calculations
- Full library of body marks and annotations
- Veterinary information management and reporting
- User-definable graphic exam modes are applicable for different types of animals
- Various of accessories to fit your needs in any situations



Capable B/W Ultrasound for Animal care



Excellent Image Quality

- Dynamic multi-beam imaging
- Spatial compound imaging
- Pure inversion harmonic imaging
- Tissue specific imaging
- Wide-scan Imaging for linear transducers
- PW with Auto Trace

User Friendly Designs

- 15.6 inch high definition LED monitor
- Noiseless system
- Quick boot up
- Auto brightness for screen and control panel
- Water resistant keyboard cover