

# Portable X-ray Solution



- Smart and efficient, suitable for a variety of needs
- Compact structure, strong applicability
- Affordable , cost-effective, low maintenance charge

## Product features



① Small and light, easy to use portable



② Shortcut keys for 6 groups of exposure parameter.  
More efficiency, Less error



③ Wired manual exposure



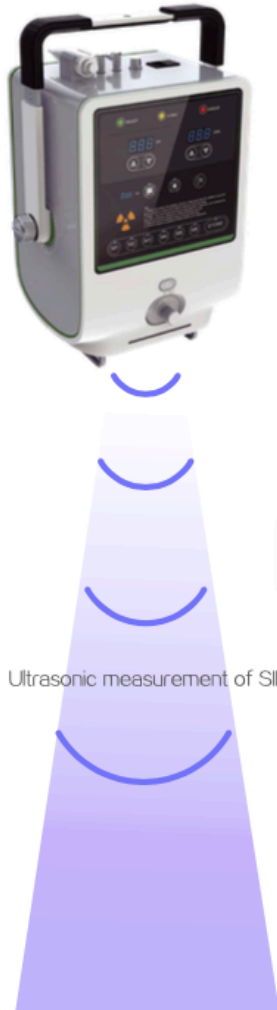
④ Wireless controlled exposure



⑤ Bluetooth Support  
Easy connection to computer



⑥ Ultrasonic ranging



Dual laser positioning light sources are built in the head, which coincide at SID100cm to assist you in fast and accurate positioning



# Specifications

## Portable X-ray

	2kW	5kW
Power Supply	AC 100-240V	AC 220V/110V
Power (kW)	2	5
Battery	DC 16.8V	N/A
kV	40-90	40 - 125
mA	10 – 32	10 - 100
mAs	0.1 – 30	0.1 – 100
Focal Spot Size (mm)	0.8	0.6 / 1.8
Target Angle	20°	15°
Communication	Rs232/Bluetooth	
Exposure	Hand Switch / 315M	
Weight (kg)	8	16
Dimensions (mm)	313 x 237 x 187	349 x 230 x 372

## Detector Wifi 1417 FPD

Detector Technology	a-SI with direct dep CsI
Active area (inch)	14x17
Active Matrix (pixels)	2304x2800
ADC (bits)	16
Pixel Pitch (µm)	150
Spatial Resolution (lp/mm)	3.4
Final Image time(sec)	5
Dimensions (mm <sup>3</sup> )	384 x 460 x 15
Weight (kg)	3.3
WIFI	2.4G and 5G IEEE802.11 a/b/g/n/ac