

Sibelmed®

A new audiometry concept for
Occupational Medicine, Primary Health
Care and Educational Centers



 236 x 197 x 77 mm.

 600 g.



Portable



2 models
A-AOM



Manual and automatic
audiometry



Data export
via Ethernet



W50 Software

AUDIOMETER SIBELSOUND DUO



USB



Ethernet

www.sibelmed.com

SIBELSOUND DUO · portable audiometer

DUO





SIBELSOUND DUO is a 2-channel audiometer that has been developed by the R&D&i department at SIBELMED, in compliance with the European Directive on Medical Devices and the highest quality standards.

The portable and lightweight features of the **SIBELSOUND DUO** makes the device ideal for performing audiometries in any setting.

A Model	AOM model
Air conduction	Air conduction Bone conduction Masking

-  **Touchscreen**
Color
-  **Portable**
Transport bag included
-  **Ergonomic**
Designed for maximum convenience
-  **Power Supply**
Mains or alkaline/rechargeable batteries



- Connectivity**
USB and Ethernet 
- Automatic audiometry**
Hughson-Westlake 
- Database**
1,000 test and unlimited patients 
- Data export**
Directly from the device via Ethernet (PDF, XML and CSV) 



MANUAL ENTRY OF NEW PATIENTS



ILLUMINATED PATIENT RESPONSE BUTTON



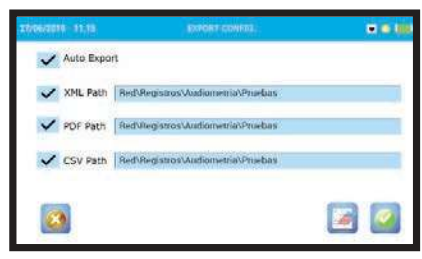
TEST RESULTS



DATABASE



AUTOMATIC HUGHSON-WESTLAKE AUDIOMETRY

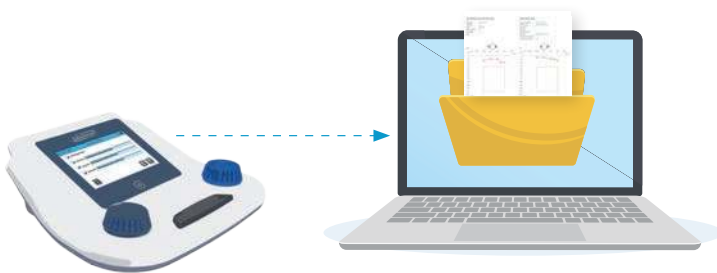


DATA EXPORT

Data export

The audiometer has 2 options for exporting test files directly via Ethernet in standard formats (PDF, XML and CSV):

- Directly **from the audiometer**. The files are exported through the Ethernet connection from the device to a target folder, without the need for software.
- Using the **W50 software**. Through the USB connection between the device and the computer.



Automatic Hughson-Westlake audiometry

SIBELSOUND DUO can be used to carry out audiometry tests in automatic mode, which requires minimum intervention of the technician.

This mode guarantees that the test is conducted correctly, as it follows the automatic Hughson-Westlake audiometry protocol.



W50 Software

FREE updates

SIBELSOUND DUO can be connected to the audiometer's **W50** software via USB, which allows the user to view, store, transfer and analyze audiometry tests.

- Perform audiometries in real time.
- Import the tests performed with the audiometer.
- View audiometry tests.
- Audiometry chart with test results.
- Compare tests conducted on the same patient.
- Consult the diagnosis.
- Customized reports.
- Print reports.
- Download tests in PDF and XML.
- Management of different databases.
- Upgrades of the **SIBELSOUND DUO** firmware.
- Compatible with all Sibelmed audiometers.
- Valid for Windows 7, 8.1 and 10.



SIBEL SOUND DUO · portable audiometer

DUO

Technical Specifications

	A Model Code 09132	AOM model Code 09133
Audiometer type, as specified in EN 60645-1	Type 4 (Screening)	Type 3 (Basic diagnosis)
Pure tone threshold audiometry by air conduction	Yes	Yes
Pure tone threshold audiometry by bone conduction	--	Yes
Masking	--	Narrow Band Noise

Channels	2	
Tone	Pure and Warble (FM)	
	Continuous and Pulsating	
Inverted tone	Yes	
Noise increase (dB)	5	
Air conduction frequencies (Hz)	125 - 250 - 500 - 750 - 1000 - 1500 - 2000 - 3000 - 4000 - 6000 - 8000	
Bone conduction frequencies (Hz)	--	250 - 500 - 750 1000 - 1500 - 2000 3000 - 4000 - 6000
Intermediate frequencies (Hz)	125 - 750 - 1500	
Air conduction levels (dB HL)	Max. 100 / Min. -10	
Bone conduction levels (dB HL)	--	Max. 65 / Min. -10
Masking (dB HL)	--	Max. 100 / Min. -10
Intercom	Yes	
Calculation of hearing loss	Yes	
Diagnoses	Council, IMSS Mexico, ELI, SAL, Klockhoff	

Measurements	236 x 197 x 77 mm.
Weight	600 g.
Screen	Color touchscreen
	95 x 54 (mm.) · 480 x 272 (pix.)
Internal database	> 1,000 tests
	Unlimited patients
Connectivity	USB --> PC connection for software Ethernet --> Connection for data export
Power Supply	External power supply (Input: 100-240 Vac, Output: 12 Vdc) 4 AA 1.5V batteries · 4 Ni-MH rechargeable batteries

Standard Accessories

- User Manual
- 03658 USB connection cable for PC
- 03024 W50 demo mode software
- 01807 Patient response button
- 09460 Set of DD45 headphones
- 02258 Set of headphones, bone conduction B71W (AOM Model)
- 09489 Carry case
- 09459 External power supply

Optional Accessories

- 09134 Automatic audiometry
- 09505 Data export via Ethernet (07886 cable included)
- 02303 W50 Software License
- 02260 Set of TDH39 air conduction headphones
- 03078 Sound suppressors for air conduction (Audiocups)



SIBEL S.A.U. Rosellón 500 bajos, 08026 BARCELONA (Spain)
 National Sales: Tel. +34 93 436 00 08 e-mail: comercial@sibelmed.com
 International Sales: Tel.+34 93 436 00 07 e-mail: export@sibelmed.com
 Technical Service: +34 93 433 54 50 e-mail: sat@sibelmed.com Fax: +34 93 436 16 11
www.sibelmed.com



CE0318 EN ISO 13485:2016+AC:2018 EN ISO 9001:2015



Sistema de Gestión
ISO 9001:2015

